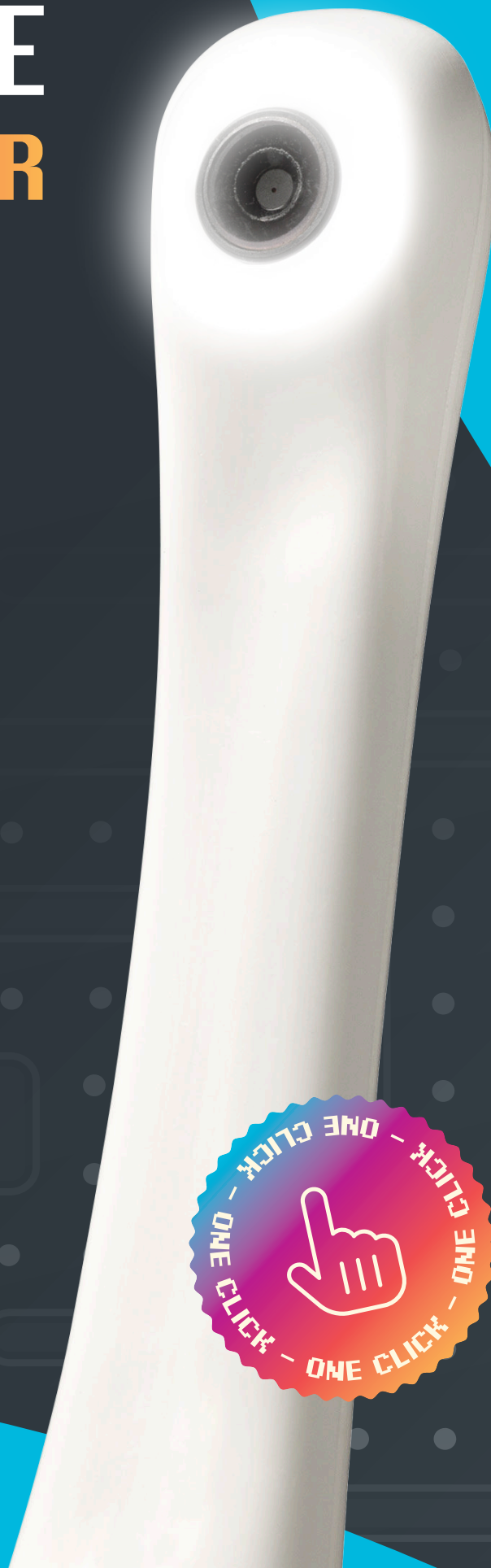


C20

EASY TO USE

EASY TO MASTER

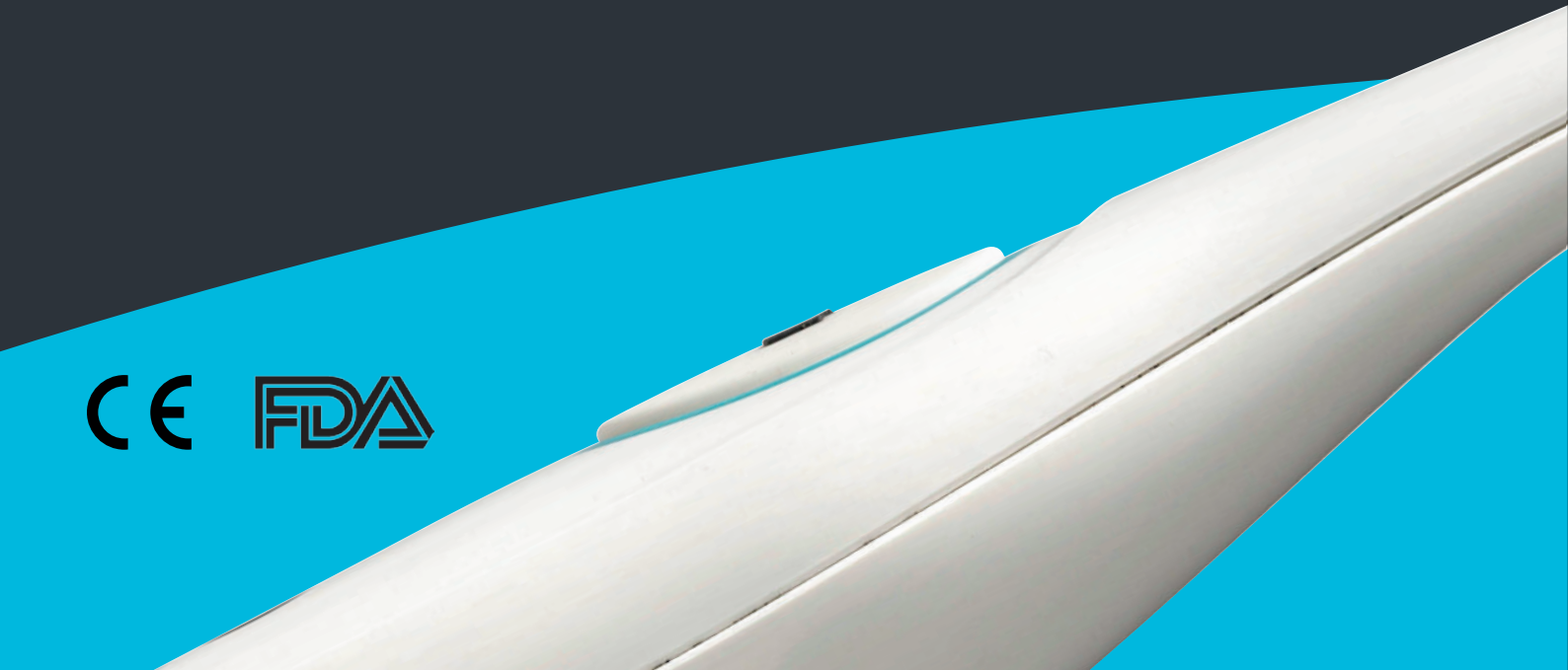


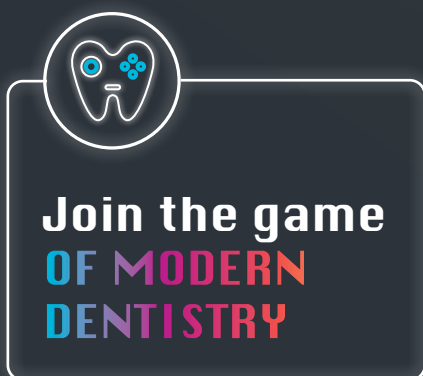
C20

Easy to use. Easy to master.

ACTEON®, as global leader in the dental and imaging industry, we have been supporting practitioners for over 20 years with innovative solutions tailored to their needs. With thousands of intraoral cameras sold worldwide, ACTEON® is a trusted name in the field, recognized for its expertise and commitment to quality.

Proudly made in Europe, our new C20 intraoral camera adheres to the highest standards of safety and reliability.





More than just a tool, The C20 enhances the diagnostic process by creating an engaging and interactive experience for both the dental team and their patients.

By streamlining communication and boosting chairside efficiency, the C20 helps transform practices into high-performing, patient focused environments.

Join the game, And optimize your time.

Seamlessly navigate the patient's mouth. **Our tools enable easy diagnosis, treatment planning, and patient communication, two-way interactive care.**

Quick to learn, any team member can operate the camera with ease.



Bright Halo

Provides a soft, uniform light around the teeth, ensuring exceptional clarity and visibility for precise diagnostics and detailed imaging.



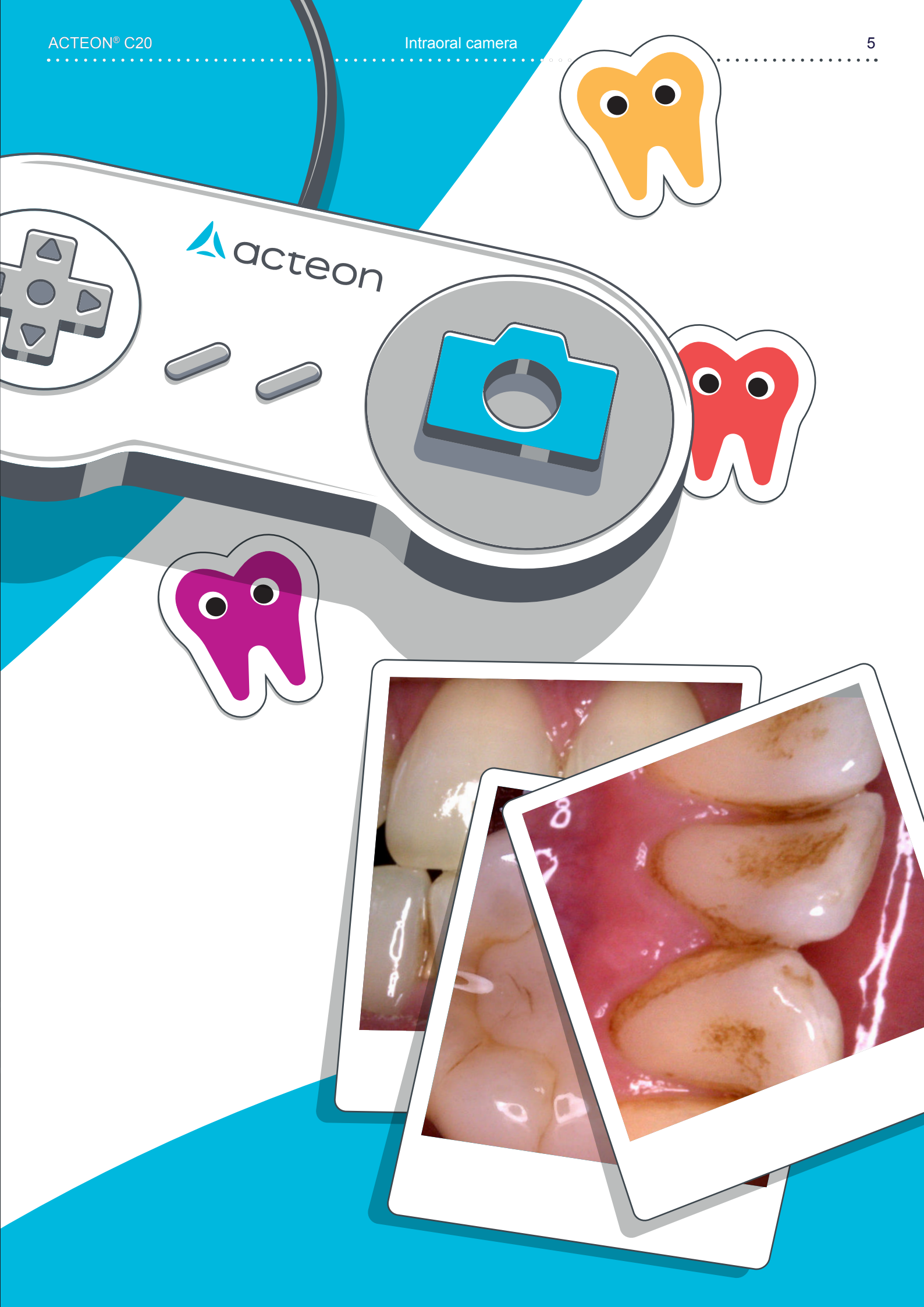
Fog light

Prevents lens condensation during use, ensuring clear, uninterrupted visuals of the teeth for accurate diagnostics and consistent image quality.



Automatic flipping

Ensures the image is always correctly oriented, whether capturing maxillary or mandibular views, providing seamless and intuitive imaging without manual adjustments.

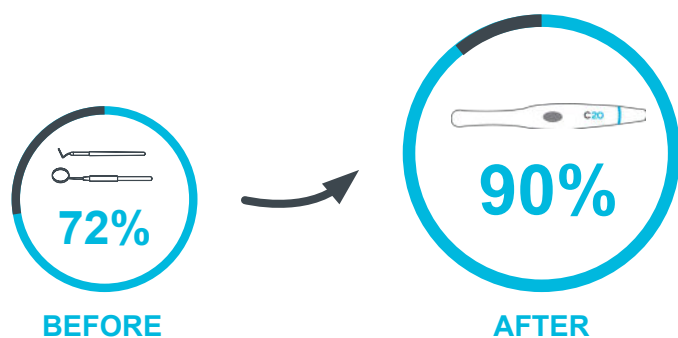


Level up your practice, And boost patient acceptance rate.

High-quality full HD image to help your patients understand their oral health and encourage two way communication that **boosts treatment acceptance rates.**

Highlight before-and-after images to increase your patients understand and build trust.

A **25% growth** was observed by Dr William W. Oakes, and published in an article challenging preconceptions that even if patients have full confidence in their dentist, the use of an intraoral camera significantly improves the acceptance rate.



Press start, And Go.

The C20 offers a **plug-and-play experience**, making it **straightforward** to install in any dental office. Its **intuitive design** ensures that users can start capturing and managing images immediately, enhancing workflow without any disruption.



Plug & Play

Ready to use with
pre-installed driver.



Universal connectors

USB 2 & universal
socket.

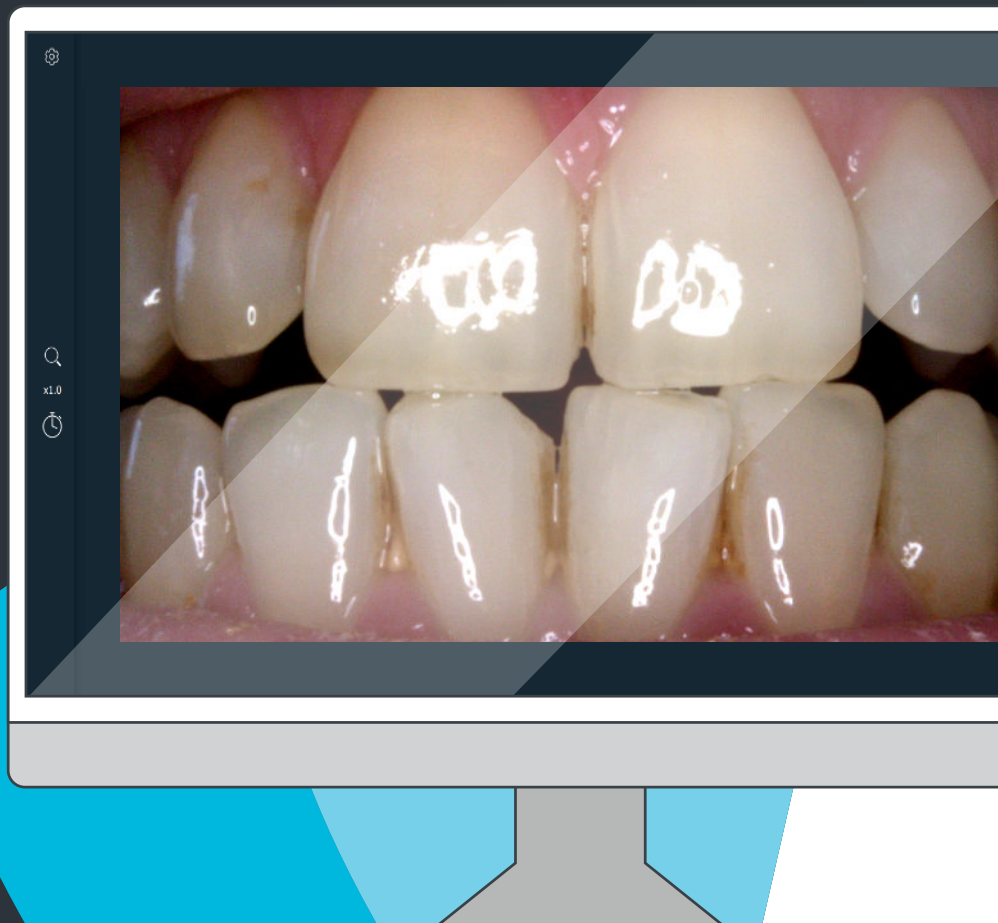


Customize settings

A wide range of settings
to suit your needs.



Windows® & Mac® compatible



Master your C20 with ACTEON® Club

Choose ACTEON® C20 and **gain membership to the exclusive ACTEON Club**, unlocking a world of premium content such as **video tutorials, webinars, tips, tricks** and much more.



Customer care:

Our **teams of experts** are always by your side, empowering you to **achieve the best outcomes** while enhancing your confidence and satisfaction.

cs@acteongroup.com
0800 702 014



acteon-club.com





Technical specifications

Product data

Camera Specifications

Sensor	CMOS
Resolution	1920 x 1080px
Distortion	-8%
Frame per second (FPS)	25 - 30
Aspect ratio	16/9
Lighting	8 white LEDs
Focus adjustment	Fixed focus
Image capture	Capture button or footswitch (optional)
Field Of View Diagonal (FOVD)	70°
Cable lengh	3m
USB output	2
Consumption	2.5W
Handpiece dimensions	L: 200,9; W: 26.9; H: 23.3mm
Handpiece weight	35g
International Protection Marking (IP)	Dust & waterproofness protection IP53

Configurations

Computer requirements	Specs
CPU	Intel® Core i5 4 core 2GHz Gen 8 or greater and Apple M1 or greater
RAM	8GB
USB version	2.0 or greater
USB chipset	Intel or NEC®/RENESAS®
Operating system	from Windows 10 PRO 64 bits or macOS® Ventura





SOPRO

A company of ACTEON® Group

**CE ZAC Athélia IV,
avenue des Genévriers,
13705 LA CIOTAT, France**

Tel. +33 (0) 442 980 101

Fax. +33 (0) 442 717 690

info@acteongroup.com

Follow-us



Class I medical device for dental care. CE. For professional dental use only. This medical device is not refunded by health insurance organizations. Read carefully the instructions before use.
Manufacturer: Sopro® ACTEON® Group (France)