

Intraoral camera

# YOUR VIEW. WHERE OTHERS CAN ONLY IMAGINE

Enhancing your workflows  
through innovation

C50



# Remarkable clinical vision

## FULL HD

Clear and detailed images

- A more **confident** final diagnostic
- Increased case **acceptance**

## VISION MODE

Transcript of **natural colors**

- **Straight forward** patient education
- Great for comparing teeth stain and sharing it with patient

## AUTO FOCUS

Gain of time & **better image clarity**

- **Easy to use**
- Improved **patient comfort**

## MACRO VISION

**More visibility** of fissures & caries

- **Easier** clinical evaluation
- **Enhanced communication** between clinician and patient

## DEPTH OF FIELD

**5 camera shots\*** available in **ONE camera**

- **User-friendly** product for an improved procedure
- **Quick switch:** from one position to another **in a second**

\*The 5 camera shots include macro, portrait, smile, tooth and intraoral



# All you need to see at your fingertips

## Unprecedented vision with Daylight mode

- Improved interpretation of tooth shades with rendering of natural colors.
- A powerful support for controlling pathologies, post-treatment and facilitate the follow up process.



## Exclusive macrovision performance

- Extreme visibility for ultra-precise diagnosis.



## But also...

- Crystal clear vision with greater depth of field.
- A single camera for all shots: macro, intraoral, tooth, smile and portrait.



## Improved patient follow-up

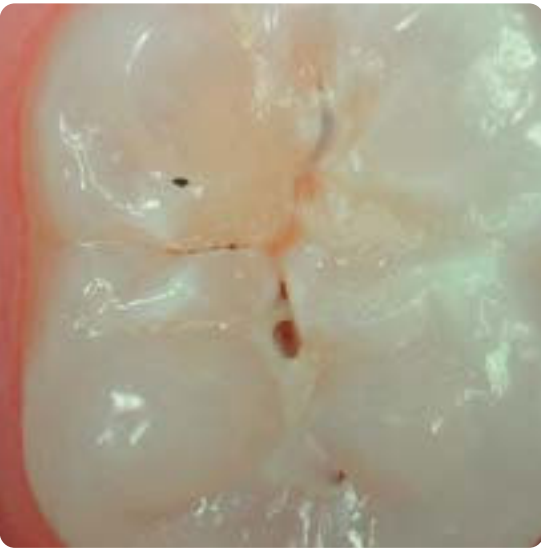
- More information about your patients: age, illnesses, diet, oral hygiene, etc.
- Lasting trust between you and your patients.



# Remarkable clinical versatility

## Vision modes for a detailed and more reliable diagnosis

### DAYLIGHT MODE



Record of **natural colors** for a better interpretation of tooth shade, pathology identification and patient follow-up.

### DAYLIGHT+ MODE



**High contrasts** emphasizing anatomic fissures and details of the dentin structure/depth.

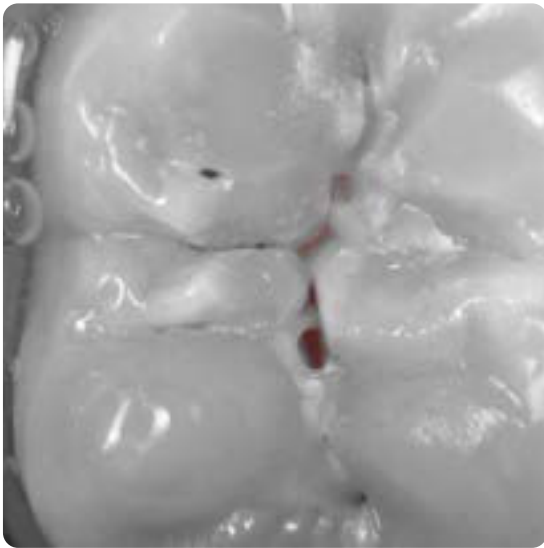
# A versatile system to access a large panel of cases

### PERIO MODE



Enhancement of **dental plaque and gingival inflammation** thanks to chromatic amplification.

### CARIO MODE



Caries **detection by fluorescence** technique by LEDs.

## Camera modes for complete patient follow-up



### Daily dentistry follow-up

**Daylight or Diagnostic-Aid option** helps you visualize anatomical details that are invisible to the naked eye or with a mirror. These modes allow the dentist to show the difference between «before» and «after» care.

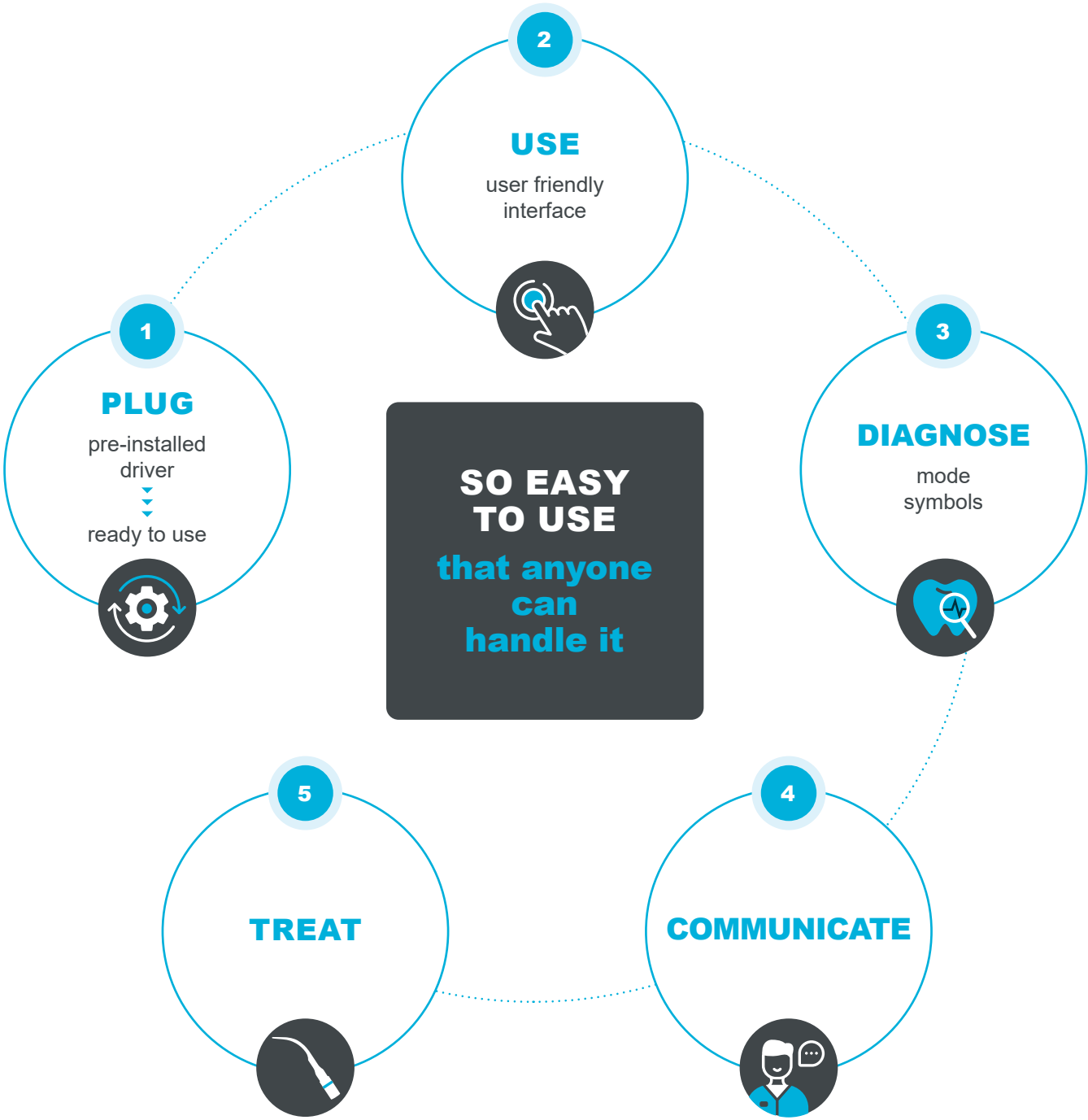


### Orthodontics follow-up

The portrait position turns off the LED light to capture the patient's facial or lateral side, ensuring the best orthodontics follow-up.



# Remarkable operational freedom



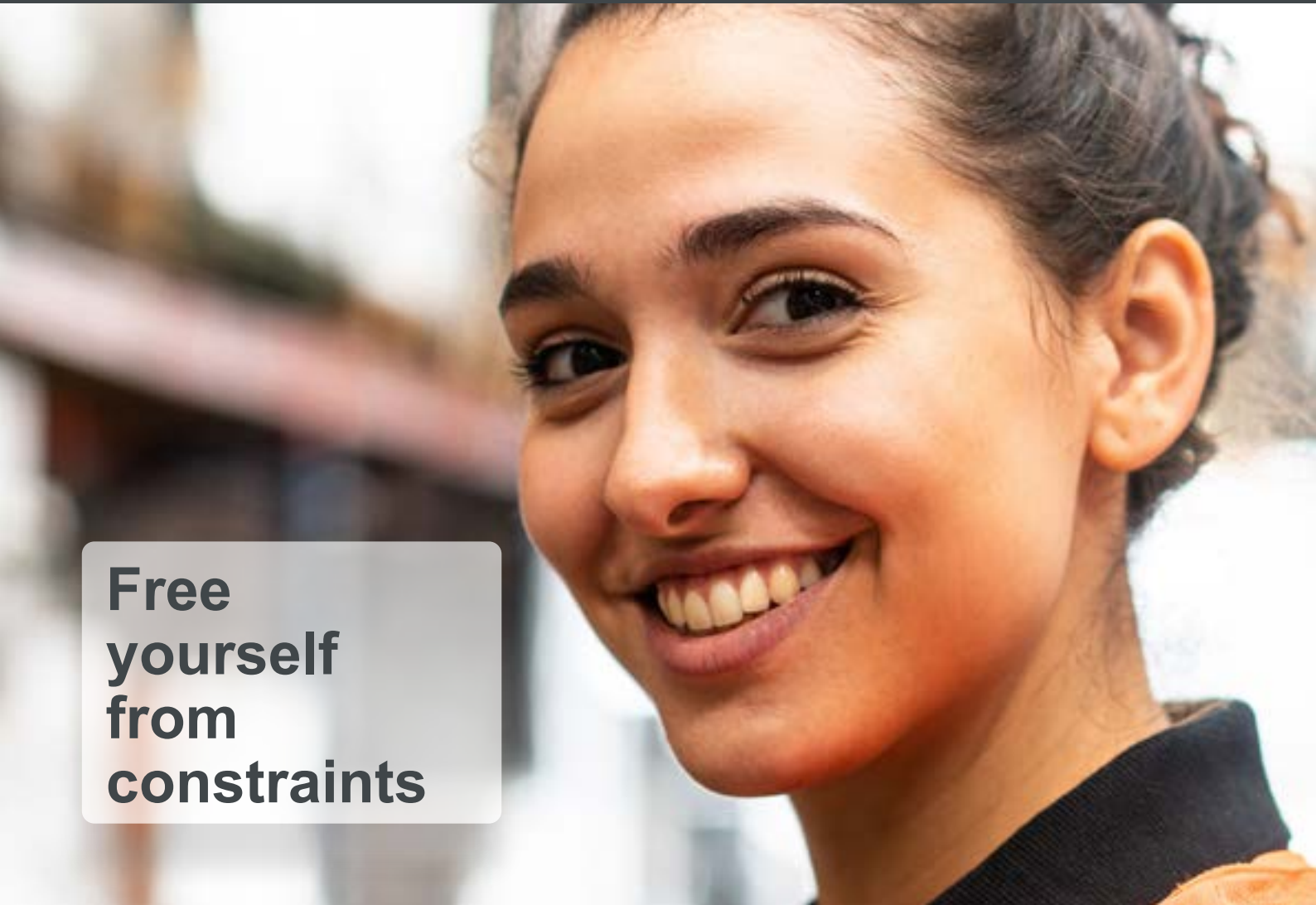
## Fully compatible



### Open to anyone

Easily integrated into any software, do not waste any more time installing support tools.

Free yourself from constraints





# Beyond the details

Patients become more involved as they quickly understand the importance of the suggested treatment.

**Increase  
treatment  
acceptance**

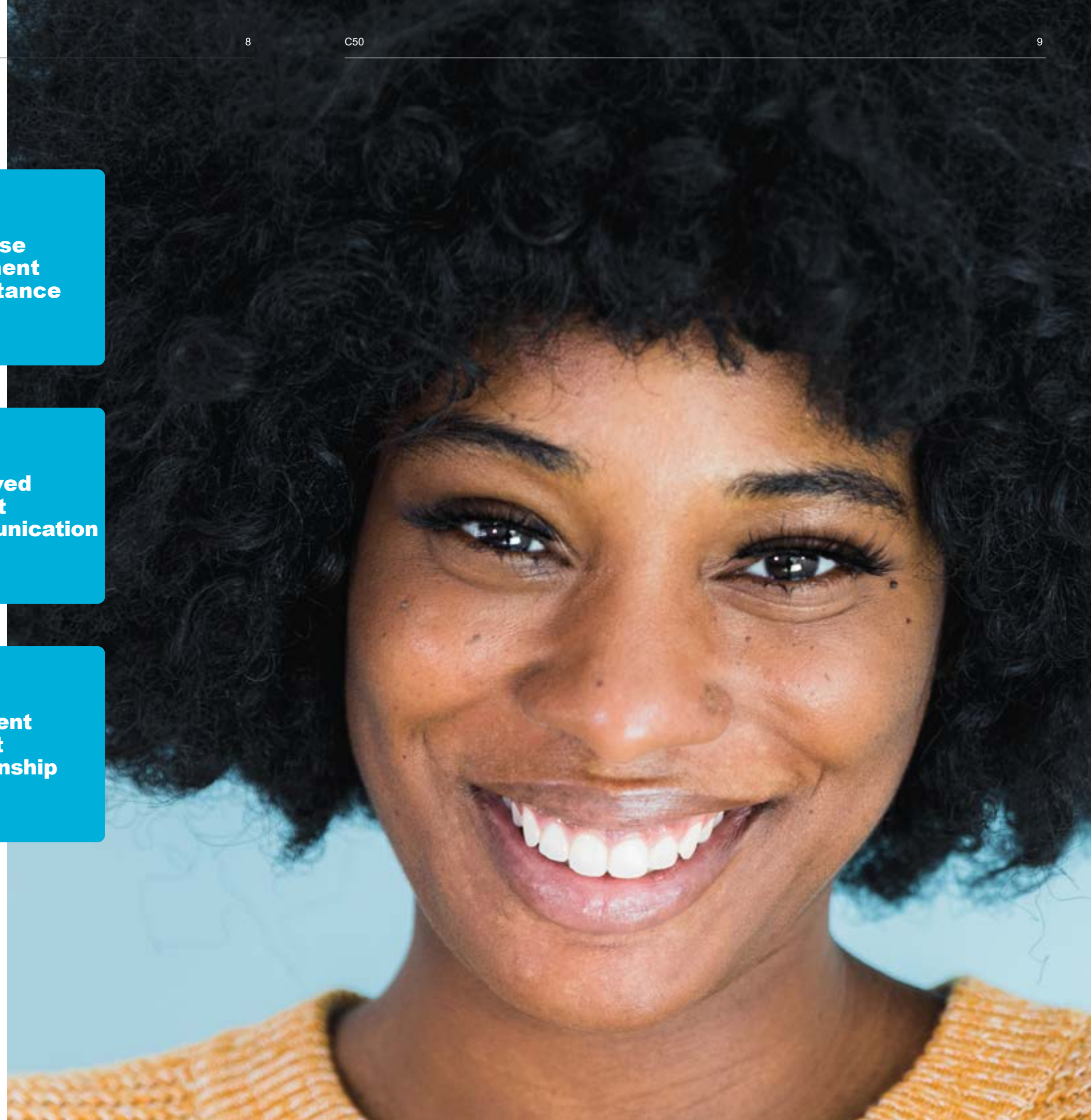
Highlight pathologies and explain clinical procedures easily. Facilitate dialogue to address objections and patient concerns.

**Improved  
patient  
communication**

Provide effective treatment planning by saving the images directly in the patient record. Easily compare images from previous patient visits and monitor progress.

**Confident  
patient  
relationship**

**Empowering you  
to focus on what  
matters the most:  
your patients**







## About Caries Detection workflow

With ACTEON®'s caries detection product portfolio, you can implement an efficient caries detection and treatment workflow. It also helps you communicate more successfully with your patients and increase confidence.



### Detect & diagnose

I see a large number of patients every day, so my practice requires that me and my team stays on top of its productivity.



**C50**

C50 intraoral camera is the perfect companion for non-invasive and reliable caries detection, thanks to its fluorescent technology



### Treat

I need to make my treatment as efficient and minimally invasive as possible for my patients.



**newtron**

With its controlled linear vibrations and frequency adjustment, Newtron® P5XS B.LED allows precise treatments and preserves tissues. It makes the treatment more comfortable for both the patient and yourself.



### Follow-up

I need to be able to do the proper follow-up on my procedures while minimizing the radiation exposure for my patients.



**x-mind  
unity**

**sopix  
plug-in**

I can provide the most complete follow-up at the lowest dose to my patients thanks to my X-Mind® unity with Sopix Plug-in and the ACE technology



### Protect

I need to ensure optimal clinical protection for my patients and limit the risk of cross-contamination.



**riskontrol**

Riskontrol® disposable tips are your must-have solution to perform dental care in a safe and clean place. It assures protection, comfort and safety in every daily clinical procedures.

# Camera specifications

Sensor	CMOS
Resolution	1920 x 1080px
Sensitivity	2 lux
Frame per second (FPS)	25 – 30
Aspect ratio	16/9
Lighting	6 white LEDs and 2 blue LEDS
Focus adjustment	Automatic focus or Single focus
4 Visions mode	DAYLIGHT mode If option enabled: DAYLIGHT+ mode, PERIO mode and CARIO mode
Depth of field	From portrait to macro
Image capture	Capture button or footswitch (optional)
Angle of view	75°
Cable length	3m
USB output	3.0
Consumption	4.5W max
Handpiece dimensions	L: 200; W: 30; H: 24mm
Handpiece weight	100g
International Protection Marking (IP)	Dust & waterproofness protection IP53

# Computer Configuration Requirements

Computer requirements	Specs
CPU	Intel Core i5 4 core 2GHz Gen 8 or greater and Apple M1 or greater
RAM	8GB
USB version	3.0 or greater
USB chipset	Intel or Renesas
Operating system	from Windows 10 PRO 64 bits or macOS Catalina

Class I medical device for dental care. CE. For professional dental use only.  
This medical device is not refunded by health insurance organizations. Read carefully the instructions before use.  
Manufacturer: Sopro® ACTEON® Group (France)  
Date of modification: March 2023





## **SOPRO**

A company of ACTEON® Group

**ZAC Athélia IV,  
avenue des Genévriers,  
13705 LA CIOTAT, France**

**Tel. +33 (0) 442 980 101**

**Fax. +33 (0) 442 717 690**

**[info@acteongroup.com](mailto:info@acteongroup.com)**

Follow-us

